

INCONTROL for Production Management NT Solution CD

Release Notes
Version 1.05 Level 0001
FD3629



Assuring Business Availability™

BMC Software, the BMC Software logos, and all other BMC Software or New Dimension Software product or service names are registered trademarks or trademarks of BMC Software, Inc. or New Dimension Software Ltd., a wholly owned subsidiary of BMC Software, Inc. All other registered trademarks or trademarks belong to their respective companies.

Copyright © 2000 New Dimension Software Ltd. All rights reserved.

EPM-105G-R0001B NT Solution

Restricted Rights Legend

U.S. GOVERNMENT RESTRICTED RIGHTS. UNPUBLISHED-RIGHTS RESERVED UNDER THE COPYRIGHT LAWS OF THE UNITED STATES. Use, duplication, or disclosure by the U.S. Government is subject to restrictions set forth in FAR Section 52.227-14 Alt. III (g)(3), FAR Section 52.227-19, DFARS 252.227-7014 (b), or DFARS 227.7202, as amended from time to time. Send any contract notices to Contractor/Manufacturer:

BMC Software, Inc.

2101 CityWest Blvd.
Houston TX 77042-2827
USA

Contacting BMC Software

You can access the BMC Software Web site at <http://www.bmc.com>. From this Web site, you can obtain general information about the company, its products, special events, and career opportunities. For a complete list of all BMC Software offices and locations, go to <http://www.bmc.com/corporate/offices.html>.

USA and Canada

Address BMC Software, Inc.
2101 CityWest Blvd.
Houston TX 77042-2827

Telephone 713 918 8800 or
800 841 2031

Fax 713 918 8000

Outside USA and Canada

Telephone (01) 713 918 8800
(01) 713 918 8000

Fax

(01) 713 918 8000

▶▶▶ Introduction

This document describes release FD3629 of Enterprise Production Management NT Solution CD Version 1.05 Level 0001.

NT Solution CD provides automatic installation of the following Enterprise Production Management products on a Windows NT platform:

- ENTERPRISE/CS for Windows NT Version 1.5.0 Level 9903
- CONTROL-M/Server for Windows NT Version 2.2.4
- CONTROL-M/Agent for Windows NT Version 2.2.4

Distribution Media

FD3629 is distributed on CD.

Documentation

The following documentation is included on the CD as part of this release:

- CONTROL-M/Server for Windows NT Version 2.2.4 – Administrator Guide (WNT224GA)
- CONTROL-M/Agent Version 2.2.4 – Administrator Guide (AGT224GA)
- Enterprise Controlstation for Windows NT Version 1.5.0 – User Guide (ECSUserGuide150)
- Enterprise Controlstation for Windows NT Version 1.5.0 – Administrator Guide (ECSAdminGuide150)
- CONTROL-M/Desktop Version 1.5.0 – User Guide (MDesktopUserGuide150)

Each document resides in the appropriate sub-directory for the product on the CD.

►►► Overview

INCONTROL for Production Management is an integrated solution that delivers multi-platform production control and scheduling from a focal point of management. INCONTROL for Production Management consists of a suite of products which include CONTROL-M/Server, CONTROL-M/Agent and Enterprise Controlstation.

CONTROL-M/Server schedules, submits and tracks jobs across a network. The load balancing feature of CONTROL-M/Server enables users to attain maximum production throughput by ensuring that each job is submitted on a machine which possesses sufficient resources to execute the job efficiently.

CONTROL-M/Agent processes job-handling requests from CONTROL-M/Server. CONTROL-M/Agent submits jobs for execution on the agent platform, monitors jobs and performs post-processing analysis of sysout files. The completion status of jobs and the results of post-processing analysis are transmitted back to CONTROL-M/Server.

Enterprise Controlstation provides control of the job production environment for the entire enterprise from a single workstation. It provides a common interface to CONTROL-M on all platforms and manages cross-platform job dependencies. The Enterprise Controlstation advanced graphical user interface enhances perception of production flow by displaying scheduling information, task status, job exceptions and analysis results for all jobs in the enterprise.

CONTROL-M/Desktop, an integral part of Enterprise Controlstation, is the production definition tool for CONTROL-M/Server and mainframe CONTROL-M users. It is a powerful tool for creating and maintaining job scheduling definitions.

NT solution CD is a comprehensive, yet simple, easy-to-use mechanism for installing CONTROL-M/Server, CONTROL-M/Agent and Enterprise Controlstation on a single Windows NT machine. After installation, all the products are connected automatically, which enables immediate use of the installed CONTROL-M/Server (CTM_NT).

▶▶▶ Installation

Hardware/Software Requirements

The following components are required for installing NT Solution CD:

Component	Minimum Requirements
Computer	Pentium II 300 MHz (minimum).
Memory	128 MB RAM.
Disk Space	450 MB free disk space.
Media Drive	CD-ROM drive.
Communication Adapter	Network connection for TCP/IP.
Software	Windows NT Version 4.0 SP3, SP4, or SP5.
IONA/Orbix	If installed, Version 2.3c Patch 17.



None of the products included on the CD-ROM nor a Database Server can already be installed on the platform.

Installation Instructions



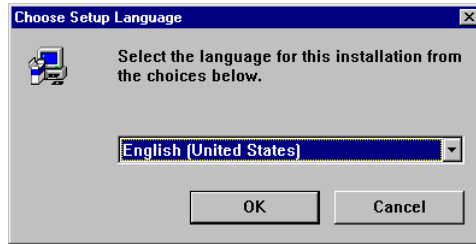
*The following instructions will automatically install all three products on the current machine. It is also possible to install each of the products separately by running **SETUP.EXE** from the appropriate sub-directory on the CD.*

Perform the following steps to install NT Solution CD:

1. Log into a user account belonging to the **Administrators** group.
2. Exit all Windows applications.
3. Mount the CD in the CD-ROM drive. The installation program should start automatically.

If the installation program does not start automatically, select the drive containing the CD from the Windows NT Explorer and double-click the **SETUP.EXE** file.

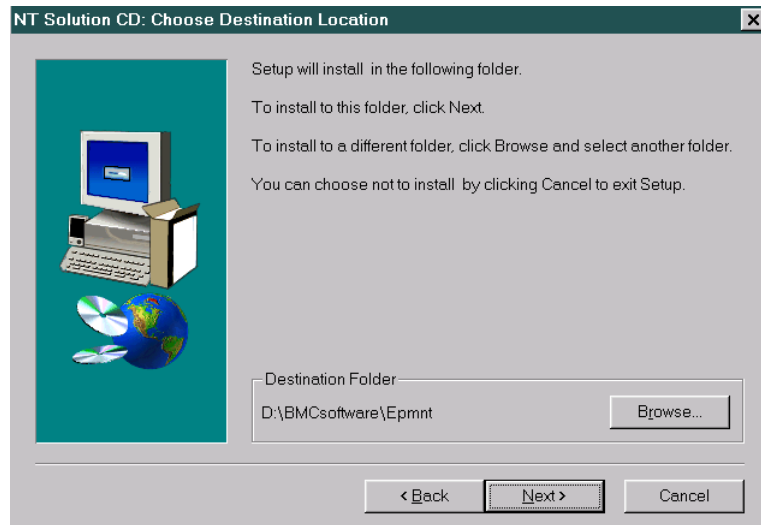
- The NT Solution CD title window is displayed. After a few seconds, the Choose Setup Language window of the installation procedure is displayed:



From the drop-down menu, select the language in which the installation windows will be displayed (**English**, **French** or **German**).

Click **OK** to continue the installation.

- The following Choose Destination Location window is displayed:



Specify the directory in which the Enterprise Production Management products will be installed. Click the **Browse** button to select a directory.



Do not select a network drive if long file names are not supported on your network drives.

Click **Next** to continue the installation.

- The installation script performs the following:
 - Pre-Installation verification of hardware and software requirements. If the minimal requirements are not met, a System Components window is displayed listing the missing components. Click **Next** and the installation process shuts down.
 - Silent installation of CONTROL-M/Server.

- Silent installation of CONTROL-M/Agent.
- Silent installation of ENTERPRISE/CS.



All components of ENTERPRISE/CS are installed except for the ENTERPRISE/CS Database Server. The installation uses the CONTROL-M Database Server.

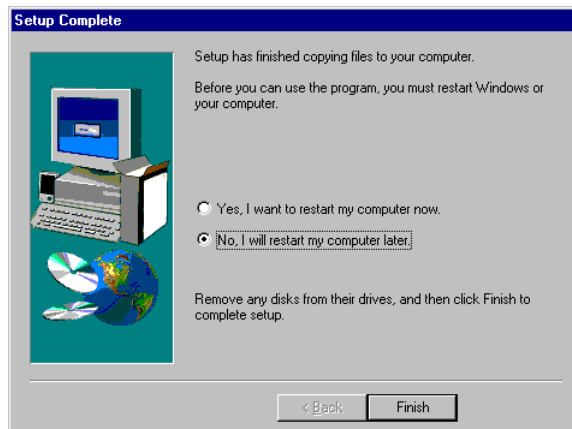
- Post Installation loading of the CONTROL-M database and definition of the CONTROL-M in ENTERPRISE/CS.

A progress bar is displayed during installation indicating the status of each stage.

7. The installation script installs all ENTERPRISE/CS components on the local machine and uses default parameters for all the products. (the default ENTERPRISE/CS Administrator and password are **ecsuser** and **ecspass** respectively.) The following table contains documentation references for these components and parameters:

Product	Document
ENTERPRISE/CS	Chapter 3, Direct Installation, in the ENTERPRISE/CS for Windows NT Administrator Guide.
CONTROL-M/Server	Chapter 5, Customization Parameters, and Chapter 7, Installation, in the CONTROL-M/Server for Windows NT Administrator Guide.
CONTROL-M/Agent	Chapter 1, General Information, and Chapter 2, CONTROL-M/Agent for Windows NT, in the CONTROL-M/Agent Administrator Guide.

8. Upon successful installation of the products, the following Setup Complete window is displayed:



Select whether to restart the computer at this time (**Yes**) or restart at a later time (**No**). If **Yes**, make sure no disks or CD-ROMs are in external drives. Click **Finish**. The setup program finishes and the computer is automatically restarted.

-
9. The Installation process checks for the following items in the program menu and creates them, if they do not already exist:
- **CONTROL-M/Server**
See Chapter 7 in the CONTROL-M/Server for Windows NT Administrator Guide for more information about the contents of this folder.
 - **CONTROL-M/Agent**
See Chapter 2 in the CONTROL-M/Agent Administrator Guide for more information about the contents of this folder.
 - **Enterprise Controlstation**
See Chapter 3 in the Enterprise Controlstation for Windows NT Administrator Guide for more information about the contents of this folder.

In addition, an **INCONTROL By BMC Software Ltd** folder is created, containing the **Uninstall NT Solution CD** option.

10. The following automatic Services are added to the Windows NT machine:
- CONTROL-M/Agent
 - CONTROL-M/Server
 - IOAe Gateway to CTM_NT
 - IOAe Global Alerts Server
 - IOAe Global Conditions Server
 - IOAe GUI Server
 - Orbix Daemon
 - Sybase SQLServer_CTM_NT

For more information, see “Starting/Stopping ENTERPRISE/CS Components” in Chapter 8 in the ENTERPRISE/CS for Windows NT Administrator Guide and “Starting/Stopping CONTROL-M Server Manually” in Chapter 7 in the CONTROL-M/Server for Windows NT Administrator Guide.

Installation Considerations

Under most conditions, the above installation process should be sufficient. However, one of the following situations may occur:

Problem	Action
<p>The following message indicates that the Windows NT system variable PATH= is full and no new libraries can be added:</p> <p>String variable is not large enough for string. Check the string declarations.</p>	<p>Click OK to close the error window. Remove any unnecessary libraries from the system variable and reinstall the NT Solution CD.</p>
<p>The connection status between ENTERPRISE/CS and CONTROL-M indicates as formatting AJF.</p>	<p>Shut down and restart the ENTERPRISE/CS Gateway (see Chapter 8 in the ENTERPRISE/CS Administrator Guide for further details).</p>
<p>A warning message is displayed:</p> <p>The installation of ... has not been completed. Nt Solution CD copied xxx files out of yyy installation files.</p> <p>followed by the Question:</p> <p>Would you like to continue with the installation?</p> <p>where xxx is the number of files installed and yyy is the total number of files that should have been installed from the NT Solution CD.</p>	<p>Select YES if Orbix is already installed on the machine. Other wise, it is recommended to select No.</p> <p>If you select NO, run the uninstallation process for each product separately. See the following chapters:</p> <ul style="list-style-type: none"> ■ ENTERPRISE/CS Administrator Guide, Chapter 3 ■ CONTROL-M/Agent Administrator Guide, Chapter 2 ■ CONTROL-M/Server Administrator Guide, Chapter 7 <p>Rerun the NT Solution CD installation process.</p>

Uninstallation

Perform the following steps to uninstall NT Solution CD:

1. Shut down ENTERPRISE/CS, CONTROL-M/Server and CONTROL-M/Agent. Make sure that all windows of these products are closed and that all services listed in step 10 of the Installation Instructions are stopped.
2. Select the **Uninstall NT Solution CD** option from the **Start** ⇨ **Programs** ⇨ **INCONTROL By BMC Software Ltd** menu.
3. The uninstall process uninstalls ENTERPRISE/CS. During this uninstallation process, a DOS window is displayed. Record the name of the ENTERPRISE/CS root directory that is displayed on the next to last line in the DOS window. This directory should be removed manually at the completion of the uninstallation process.

Press any key to close the DOS window.

4. The uninstall process continues, uninstalling CONTROL-M/Agent and CONTROL-M/Server. A DOS window is displayed. Press any key to close this window.
5. Upon successful uninstallation of all selected CONTROL-M/Agent and CONTROL-M/Server components, a Confirm File Deletion window is displayed. Click **Yes** to continue with the uninstallation process.
6. An Uninstall Complete window is displayed. Click **OK** to complete the uninstallation process.
7. A dialog box opens asking you if you wish to restart the machine now or later. Choose the option button that indicates your wish and Click **OK**. It is recommended that you choose to immediately restart the machine.



It is possible to uninstall each product separately using its individual uninstallation process. However, this is not advisable; if the products are uninstalled separately, certain NT Solution CD components remain on the machine.