



Q Pasa! Family for Mainframe and Distributed Systems by MQSoftware

KEY BENEFITS

- > Measure and control business services in real time
- > Prevent lost revenue and promote customer retention
- > Precisely track and account for business service usage
- > Transform compliance into a competitive advantage
- > Monitor problems via proactive alerts
- > Monitor operations across the IT enterprise
- > Record and report baseline message processing statistics
- > Generate reports and document load trends, and drill down to the information you need with user-defined business dashboards



This product integrates with BMC Atrium technologies.

Q Pasa! by MQSoftware delivers an accurate view of messaging and transaction speed, creating a complete record of business service performance across your enterprise, as it revolutionizes the contribution of IT in supporting key business initiatives. The solution's scalability and simple customizations contribute to faster application deployment and greater process improvement success. Q Pasa! is the solution for greater, more focused control over your middleware environment.

BUSINESS FEATURES AND BENEFITS

In the race to align your IT systems performance with key business initiatives, an accurate, real-time view of in-flight messaging and transaction status and speed provides competitive advantage and accountability. Q Pasa! by MQSoftware is the solution for focused control of your complex middleware environment. Key features and benefits include:

- > Performance and availability management: Q Pasa! by MQSoftware's accurate view of middleware infrastructure provides a comprehensive record of business service performance across your enterprise, and helps support your fact-based approach to key business initiatives.
- > Real-time monitoring: Constant, real-time monitoring of every component via configurable dashboards identifies business service slowdowns and potential bottlenecks.
- > Event management: Q Pasa! by MQSoftware allows configurable events and alerts based on business conditions. The instant awareness of system bottlenecks and failures permits immediate intervention and correction, preventing customer dissatisfaction and lost revenue.
- > Operations management: Specific information required to isolate technology and business process failures quickly and perform root-cause level analysis is reported – resulting in less downtime, more efficient use of IT resources, and reduced operational risk.
- > Reporting and analysis: Comprehensive documentation and historical records are created for verification and improvement of your technology performance and dependability — including the availability of connections to outsourced services and partners.
- > Integration with enterprise management frameworks: Q Pasa! by MQSoftware supports direct event integration with all system management frameworks including BMC Event Manager, HP OpenView, and IBM's Tivoli Enterprise Console.

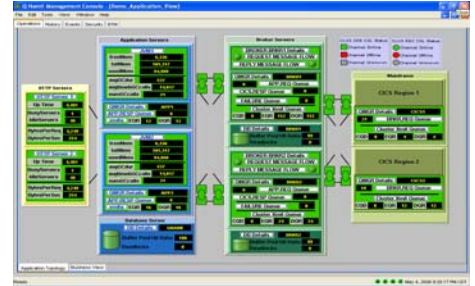
TECHNICAL FEATURES AND BENEFITS

- > Performance and availability monitoring: Lets users know the status of all key middleware technologies upon which business services depend
- > Non-invasive and ready to use, out of the box: Features ROI based on fast, easy deployment and ease-of-use functionality
- > Real-time dashboards: Delivers configurable views of performance data for business decision makers and technology personnel
- > Robust, scalable architecture: Works across a broad range of operating platforms – including UNIX/Linux, Windows, and z/OS – to give organizations a broad level of support for their enterprise
- > Multi-application monitoring: Provides real-time performance and availability monitoring for applications utilizing IBM WebSphere Message Broker, MQ, WAS, and other middleware applications

- > Address message and non-message-based Infrastructures: Previous extensive support for transaction-intensive applications by monitoring key middleware technologies
- > Granular control: Provides the ability to drill down from the application or business service view directly into the underlying technology to determine root cause and permit problem resolution

OPERATING ENVIRONMENT

- > Operating systems supported: Tandem/HP Non-Stop, Windows XP/2000/2003, Linux and zLinux, OpenVMS Alpha, Solaris/Sun OS, OS/400, SCO UnixWare and OpenServer, z/OS, HP/UX, AIX, Tru-64 Unix, MP-RAS, TPF, OS2200
- > Databases supported: IBM DB2, Oracle, Sybase, Microsoft SQL Server
- > Middleware supported: WebSphere Application Server, WebSphere MQ, WebSphere Message Broker, BEA WebLogic, IBM DB2, Oracle Database, WebSphere Interchange Server, WebSphere MQe
- > Networks supported: TCP/IP



ABOUT BMC SOFTWARE

BMC Software delivers the solutions IT needs to increase business value through better management of technology and IT processes. Our industry-leading Business Service Management solutions help you reduce cost, lower risk of business disruption, and benefit from an IT infrastructure built to support business growth and flexibility. Only BMC provides best practice IT processes, automated technology management, and award-winning BMC Atrium technologies that offer a shared view into how IT services support business priorities. Known for enterprise solutions that span mainframe, distributed systems, and end-user devices, BMC also delivers solutions that address the unique challenges of the midsized business. Founded in 1980, BMC has offices worldwide and fiscal 2006 revenues of more than \$1.49 billion. Activate your business with the power of IT. www.bmc.com.



To learn more about how BMC can help activate your business, visit www.bmc.com or call 800.841.2031

BMC, BMC Software, and the BMC Software logo are the exclusive properties of BMC Software, Inc., are registered with the U.S. Patent and Trademark Office, and may be registered or pending registration in other countries. All other BMC trademarks, service marks, and logos may be registered or pending registration in the U.S. or in other countries. All other trademarks or registered trademarks are the property of their respective owners. DB2 is a registered trademark of International Business Machines Corporation ©2007 BMC Software, Inc. All rights reserved.

