

## SmartDBA System Performance for DB2



- > Increases staff productivity with intelligent, easy-to-use, integrated features
- > Increases application availability with real-time management and tuning of DB2 performance
- > Delivers integration with BMC's SmartDBA family of products via common web-based console
- > Maximizes use of system resources to minimize hardware costs
- > Maintains consistency of performance during complex and changing application workloads
- > Exploits the functions and features of DB2 version 8.1

### BUSINESS CHALLENGE

The bottom-line success of the enterprise depends on the business applications that you manage. As your business grows and changes, so do the applications and technologies on which they are based. To ensure that the systems that support those applications always perform at their peak and that end users experience acceptable response times, IT departments must employ a proactive performance methodology that helps to monitor and optimize existing resources, meet and exceed service level needs, accurately plan for future growth, and stay within budget. System performance is critical to the success of any competitive business environment. Poor performance can result in lost time, lost customers, and lost revenue.

### BMC SOFTWARE SOLUTION

The BMC Software SmartDBA™ System Performance for DB2 solution provides the tools needed to optimize and manage current DB2® Universal Database for z/OS and OS/390 system performance while planning for future growth and capacity.

The SmartDBA System Performance for DB2 solution enables you to consolidate legacy and new technologies, transforming information into the knowledge needed to manage business applications. It satisfies the need for growth and change without impacting availability. This solution:

- > Detects and corrects DB2 system exceptions
- > Quickly pinpoints and resolves application and system bottlenecks
- > Accesses real-time and historical data for guided analysis and recommendations.
- > Allows you to manage performance of multiple, heterogeneous RDBMS from the same web-based console

The solution is the most comprehensive on the market today to address total needs for system tuning, monitoring, memory pool tuning, and dynamic configurations. It allows the novice DB2 user who is also responsible for managing other databases such as Oracle, DB2 UDB and others.

### Increases productivity

The SmartDBA System Performance for DB2 solution monitoring component provides full, extended I/O analysis, data sharing support, tuning wizards, and customizable displays. The solution includes unique Single System Image (SSI) capabilities that monitor and provide a complete picture of any data sharing group as a single entity.

## SmartDBA System Performance for DB2

All components of the solution are accessible through a common interface. The SmartDBA System Performance for DB2 main menu provides access to administrative functions, user options, DCOMPLEX selection, and the Sysplex DB2 Monitor report. The Sysplex DB2 Monitor report lists key values from each DB2 on the sysplex. The solution contains self-guided wizards to step less experienced users through the complexity of DB2 management.

### DBXRay

The DBXray GUI allows the user to quickly view the overall DB2 subsystem status and identify trouble spots.

#### SmartDBA DBXray for DB2 - Main Monitor Panel

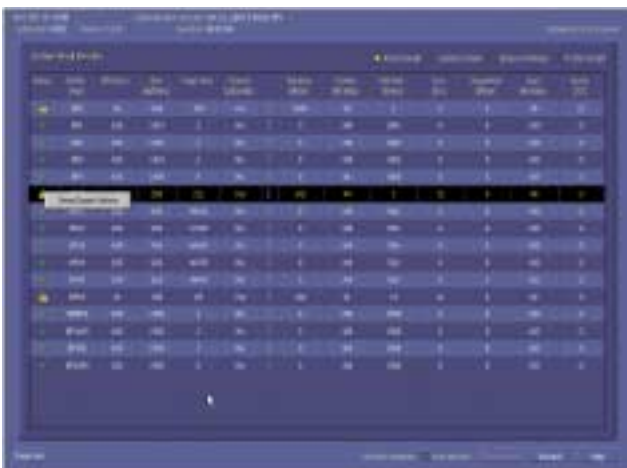


You can drill down into more detail on specific areas of the DB2 subsystem, including:

- > active thread information
- > DB2 storage pool information
- > data sharing

DBAs can drill into more detail and receive expert advice on solving performance problems.

#### SmartDBA DBXray for DB2 - Buffer Pool Details



### Real-time tuning

The SmartDBA System Performance for DB2 solution provides a dynamic way to manage resources and performance. It is the most comprehensive solution available in the market today for dynamically changing DB2 parameters and correcting operational problems. The solution ensures accurate resource allocation and delivers functionality for real-time performance management. With the system-tuning component you can change settings to improve performance without any impact or interruptions to users. It allows you to match your system needs as applications change. The solution reduces under- and over-allocation of resources by allowing you to tune to workload tune changes. By integrating the unique scheduling facility, these changes can be made when you want them made.

### Maximizes system resources

The SmartDBA System Performance for DB2 is unique in the industry in its ability to leverage built-in-intelligence to proactively optimize tuning in DB2 pools. By ensuring that DB2 pools are optimally tuned continuously, DB2 applications run more efficiently and quicker by using fewer CPU cycles and reducing I/O.

The solution provides DB2 pool tuning recommendations to accommodate changing workloads. It can be set to recommend changes or to change them automatically. These efficient tuning capabilities improve DB2 performance by

- > providing intelligent, real-time management and tuning of buffer, EDM, sort and RID pools
- > optimizing utilization of DB2 storage
- > intelligently and efficiently managing DB2's Dynamic SQL Statement Cache
- > reducing DB2-related I/Os, thereby minimizing system costs
- > adjusting pool sizes and parameters to suit current application workloads

Other benefits include reduced enduser response times and more effective use of technical resources, thus allowing applications to run more efficiently.

### SUMMARY

The components in the SmartDBA System Performance for DB2 solution work together to simplify and automate tuning so that SLAs are consistently met and users remain uninterrupted. Some of the benefits of the solution include:

- > improved application performance by providing intelligent real-time management and tuning of DB2 system resources and parameters that can impact performance
- > reduction of end-user response time
- > minimization of costs associated with DB2

## SmartDBA System Performance for DB2

- > optimization of DB2 storage
- > increased staff productivity through use of graphical console to performance of multiple database environments
- > avoidance of system problems and downtime by automatically detecting and correcting system issues before they become performance nightmares
- > maintenance of performance consistency with constantly changing application workloads

### Helping you maintain advantage

BMC Software Education Services offers a strategic investment for your business, maximizing the value for your employees and Business Service Management initiatives. Education ensures successful product implementation, promoting mastery of all product capabilities and highest productivity with your BMC Software solutions. To explore our education offerings, visit our web page at <http://www.bmc.com/bmceducation>, or contact BMC Software Education Services by telephone or e-mail:

- > **North America**  
Telephone: 800 574 4262  
E-mail: [education@bmc.com](mailto:education@bmc.com)
- > **Asia Pacific**  
Telephone: +61 3 9657 4404  
E-mail: [ISD\\_AP@bmc.com](mailto:ISD_AP@bmc.com)
- > **Europe, Middle East, and Africa (EMEA)**  
Telephone: 00800 26233822  
E-mail: [emea\\_education@bmc.com](mailto:emea_education@bmc.com)

### About BMC Software

BMC Software, Inc. [NYSE:BMC], is a leading provider of enterprise management solutions that empower companies to manage their IT infrastructure from a business perspective. Delivering Business Service Management, BMC Software solutions span enterprise systems, applications, databases, and service management. Founded in 1980, BMC Software has offices worldwide and fiscal 2004 revenues of more than \$1.4 billion. For more information about BMC Software, visit [www.bmc.com](http://www.bmc.com).



59486

