

AppWatch™ by MQSoftware™

Project-Based IBM® WebSphere® MQ Management
— for Administrators

FEATURED PARTNER



KEY BENEFITS

- > Simplify management of IBM® WebSphere® MQ environments
- > Visualize WebSphere MQ objects at a project level
- > Maximize accountability with audit-ready WebSphere MQ change log
- > Enforce the use of WebSphere MQ standards



AppWatch for Administrators provides an easy-to-use, browser-based IBM® WebSphere® MQ administration console, removing the need for platform-specific skills. Built-in security features ensure that your users only have access to relevant infrastructure objects. What's more, the product enables your WebSphere MQ administrators to expose groups of WebSphere MQ objects to users, thus reducing support overhead and increasing productivity in development and support teams.

APPWATCH SOLVES A WEBSHERE MQ ADMINISTRATION PROBLEM

AppWatch for Administrators addresses a common problem faced by large-scale users of WebSphere MQ: there is no easy way to provide architects and developers with secure access to their own queues and channels. With AppWatch, your administrators can safely grant controlled access to developers to view and manipulate WebSphere MQ objects and messages.

APPWATCH PERMITS CONTROLLED, SECURE WEBSHERE MQ ACCESS

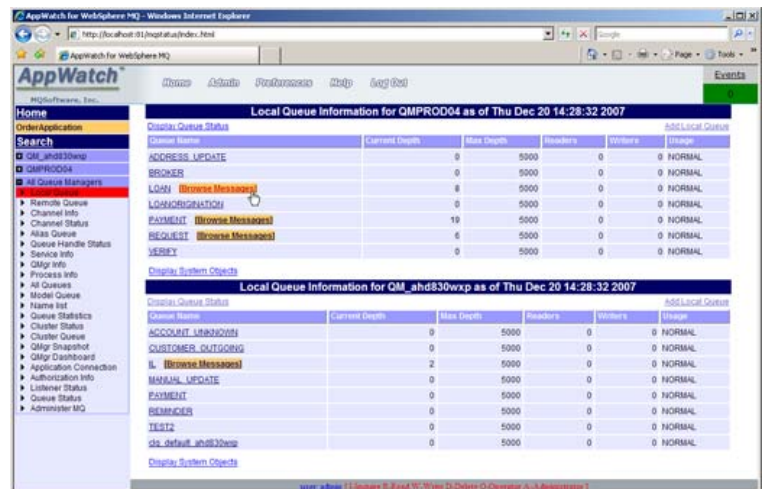
AppWatch for Administrators delivers direct access to WebSphere MQ objects, messages, and headers. It quickly identifies and resolves data-related problems, and also displays and verifies information associated with connection and queue handle status, thus easily verifying an application's use of WebSphere MQ API options.

The product's interactive graphical user interface (GUI) and scheduled tasks simplify the creation and management of WebSphere MQ test environments. Notification of problems within WebSphere MQ are created by AppWatch and may be routed to affected users, thus reducing time to resolution and minimizing impact on development timelines.

AppWatch runs on a single server, and administrators have access to all functions from their desktops. The product requires a standard Web-browser only — no other software is needed. What's more, its server-based approach means that upgrades are localized to the server, so no upgrades are necessary on client machines.

KEY TECHNICAL FEATURES

- > Support for all WebSphere MQ platforms (v5.3 and later)
- > Support for SSL channels
- > Complete message management
- > Audit trail for change control
- > Centralized connection management
- > Configuration, backup, and versioning



AppWatch by MQSoftware browser-based user interface

ABOUT MARKETZONE DIRECT PRODUCTS

Through the BMC MarketZone Direct program, BMC is able to resell third-party products that complement and/or augment our own products. As a MarketZone Direct product, these products are available under BMC license and support terms.

ABOUT BMC SOFTWARE

BMC Software delivers the solutions IT needs to increase business value through better management of technology and IT processes. Our industry-leading Business Service Management solutions help you reduce cost, lower risk of business disruption, and benefit from an IT infrastructure built to support business growth and flexibility. Only BMC provides best-practice IT processes, automated technology management, and award-winning BMC Atrium technologies that offer a shared view into how IT services support business priorities. Known for enterprise solutions that span mainframe, distributed systems, and end-user devices, BMC also delivers solutions that address the unique challenges of the midsized business. Founded in 1980, BMC has offices worldwide and fiscal 2007 revenues of \$1.58 billion. Activate your business with the power of IT. www.bmc.com.

ALIGNMENT WITH BEST PRACTICES

AppWatch promotes best practices in the measuring and monitoring of WebSphere MQ environments. Not only does it provide secure, auditable, role-based access to WebSphere MQ assets for administrative personnel, but it also delivers visualization of WebSphere MQ objects at the project level, thus ensuring business relevance. What's more, AppWatch maximizes accountability with audit-ready WebSphere MQ change logs, and enforces the use of WebSphere MQ standards in configuration and deployment.

OPERATING ENVIRONMENT

AppWatch Server available on:

- > Windows XP/2000/2003
- > IBM® AIX®
- > Sun™ Solaris™
- > Linux®

Middleware Supported:

- > IBM WebSphere MQ (version 5.3 or later)

Platforms Supported:

- > Any platform that supports IBM WebSphere MQ (version 5.3 or later), including:
 - o Tandem/HP Non-Stop
 - o Windows XP/2000/2003
 - o Linux and zLinux
 - o OpenVMS Alpha
 - o Solaris
 - o IBM OS/400®
 - o IBM Z/OS®
 - o HP-UX
 - o IBM AIX

ABOUT MQSOFTWARE

MQSoftware solutions add value by aligning businesses processes with the supporting infrastructure in real-time. The company enables transaction-centric industries — such as banking, insurance, healthcare, manufacturing, retail and government — to focus IT priorities on maintaining revenue-generating services using existing technologies to deliver high levels of customer service.

LEARN MORE

For more on AppWatch for Administrators, please visit www.bmc.com/appwatch.



To learn more about how BMC can help activate your business, visit www.bmc.com or call (800) 841-2031

BMC, BMC Software, and the BMC Software logo are the exclusive properties of BMC Software, Inc., are registered with the U.S. Patent and Trademark Office, and may be registered or pending registration in other countries. All other BMC trademarks, service marks, and logos may be registered or pending registration in the U.S. or in other countries. WebSphere, AIX, OS/400, z/OS, and IBM are trademarks or registered trademarks of International Business Machines Corporation in the United States, other countries, or both. Solaris and Sun are trademarks or registered trademarks of Sun Microsystems, Inc., in the U.S. and other countries. Linux is the registered trademark of Linus Torvalds. All other trademarks or registered trademarks are the property of their respective owners.
© 2008 BMC Software, Inc. All rights reserved.

