



BMC Batch Discovery

Understand the impact of batch workloads on business services

KEY BENEFITS

- > Enables effective change management by providing visibility of relationships among computer servers and the batch services they support
- > Integrates out of the box with BMC Atrium CMDB
- > Enhances IT's ability to prioritize and address problems based on business impact
- > Helps to avoid service outages by ensuring server maintenance windows do not conflict with batch service level agreements

As a component of the BMC CONTROL-M enterprise job scheduling solution, BMC Batch Discovery optimizes business availability and speeds the problem resolution process by aut discovering the relationships between batch services and the IT infrastructure on which they depend.

BUSINESS CHALLENGE

Key business services and processes are dependent on batch workload. Frequently, the entire business service is delivered via batch processing and, in many cases, there are significant dependencies among business services and the timely execution of batch processes. Therefore, ensuring that batch processing runs smoothly and efficiently requires knowledge of the relationship among computer servers and the batch processes they support.

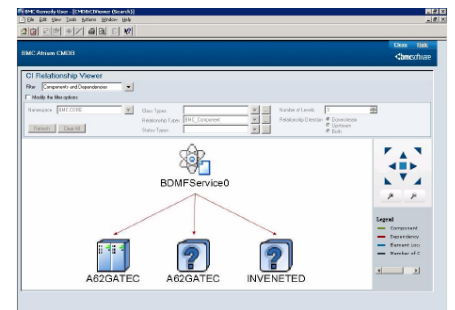
Many organizations undertake change, problem, and configuration management activities without a complete view of the relationships between IT components and batch processing. Although initiated as a scheduled outage for hardware upgrade, for example, an unplanned and catastrophic business outage or a violation of a service level agreement (SLA) may occur as a result of batch processing that could not run on the server or servers that were intentionally shut down.

Furthermore, planning activities for the support of growing volume or similar capacity planning activities should be undertaken within the context of the current resource consumption of both the transaction and the batch workload running on existing configurations. BMC Batch Discovery identifies the servers that currently support batch services and helps to ensure that batch workload is included in calculations for future capacity.

DETERMINE BATCH INTERDEPENDENCIES

BMC Batch Discovery automatically discovers and collects details about business services implemented by batch workloads.

BMC Batch Impact Manager, another component of the BMC CONTROL-M enterprise job scheduling solution, is used to define service levels for batch business services. BMC Batch Discovery traverses these definitions, determines all batch jobs along the service path of each business service, and finally, discovers the host nodes on which each job executes. Once this information has been gathered, BMC Batch Discovery defines a configuration item (CI) for each batch service and creates a relationship between the batch service CI and the CI representing each computer host node. It then updates this CI information in the BMC Atrium Configuration Management Database (CMDB).



Batch services CIs and corresponding relationships

CUSTOMER BENEFITS

Once the above relationships have been created, an accurate service model is available to the organization and the full power of service management can be leveraged for the management of the batch workload. Any changes contemplated for a server, such as decommissioning it or taking it out of service for upgrades, will immediately trigger impact to the batch business service containing any jobs that execute on that host.



This product integrates with BMC Atrium technologies.

KEY FEATURES

- > Full integration with the BMC Atrium CMDB
- > Ability to schedule discovery tasks to keep objects accurate and up to date

ABOUT BMC SOFTWARE

BMC Software delivers the solutions IT needs to increase business value through better management of technology and IT processes. Our industry-leading Business Service Management solutions help you reduce cost, lower risk of business disruption, and benefit from an IT infrastructure built to support business growth and flexibility. Only BMC provides best-practice IT processes, automated technology management, and award-winning BMC Atrium technologies that offer a shared view into how IT services support business priorities. Known for enterprise solutions that span mainframe, distributed systems, and end-user devices, BMC also delivers solutions that address the unique challenges of the midsized business. Founded in 1980, BMC has offices worldwide and fiscal 2007 revenues of \$1.58 billion. Activate your business with the power of IT. www.bmc.com.

Perhaps most importantly, if a server failure is detected by any systems management tools, such as BMC Performance Manager, the impact of that outage can be reflected in the service model. In addition, the severity of the event can be properly assessed based on its impact on batch business services, and resources can then be allocated to work on the problem according to the importance of the event to the services delivered by the business.

HOW IT WORKS

BMC Batch Discovery scans through the business service definitions managed by BMC Batch Impact Manager. These definitions contain information about batch business services and their service level requirements, such as completion time and actions to be performed in the event of an SLA breach. Using standard BMC CONTROL-M predecessor/successor relationships, BMC Batch Discovery dynamically locates all jobs that comprise the "service path" for each batch service (all the jobs that must be completed to complete the service). Once all jobs along the service path have been discovered, BMC Batch Discovery then extracts the names of the computer servers on which each of these jobs executes.

BMC Batch Discovery creates a batch service CI for each batch service that has been discovered and, if not already existing, another CI for each computer server discovered, as described above. Finally, the relationships between the batch service and the computer servers are then maintained in the BMC Atrium CMDB. The discovery process performs whatever processing is required to keep the above entities and relationships up to date. If new objects are discovered, the appropriate CIs are built. If they already exist, the information and relations are updated.

BMC Batch Discovery can be scheduled to run as frequently as necessary to ensure that the service model is kept up to date.

CONTRIBUTING TO EFFECTIVE BUSINESS SERVICE MANAGEMENT

BMC Batch Discovery contributes to effective Business Service Management (BSM) by providing key batch services information via the BMC Atrium CMDB. BSM is the most effective approach for managing IT from the perspective of the business. It helps your IT organization do more of what supports the business and less of what doesn't. With BSM, you will reduce cost, lower risk of business disruption, and benefit from an IT infrastructure built to support business growth and flexibility.

By continually updating the BMC Atrium CMDB with batch services information, BMC Batch Discovery ensures that batch data is made available to other BMC solutions — across both mainframe and distributed systems. This is a critical first step toward understanding the business impact of enterprise job scheduling, thus contributing to effective BSM.

To learn more about how BMC Batch Discovery can help you, please visit www.bmc.com.



To learn more about how BMC can help activate your business, visit www.bmc.com or call (800) 841-2031

BMC, BMC Software, and the BMC Software logo are the exclusive properties of BMC Software, Inc., are registered with the U.S. Patent and Trademark Office, and may be registered or pending registration in other countries. All other BMC trademarks, service marks, and logos may be registered or pending registration in the U.S. or in other countries. All other trademarks or registered trademarks are the property of their respective owners. © 2007 BMC Software, Inc. All rights reserved.

