

BMC PATROL for iSeries – Perform

KEY BENEFITS

- > Helps you meet or exceed service-level goals
- > Eliminates interruptions to critical business processes
- > Improves communication regarding system availability and performance
- > Allows you to identify problems quickly using flexible reporting and graphing
- > Tracks performance over time, revealing trends and potential problems
- > Increases customer satisfaction through efficient and reliable system and application performance

PATROL for iSeries - Perform helps you understand the past and present performance of your AS/400 environment. Historical analysis provides the proper business perspective for IT decisions. Workload analysis ensures your ability to view resource consumption in a way that is meaningful from a business perspective. Graphical analysis identifies trends, providing rapid recognition of normal and abnormal usage.

DELIVERING PERFORMANCE

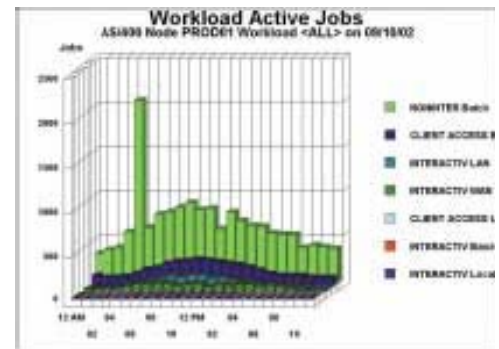
IBM's iSeries server is one of the most prevalent multi-user systems in the world. Its long-term success can be attributed to reliability, ease of use and a vast portfolio of applications. Ever evolving, the iSeries has grown from a 32-bit to a 64-bit architecture, and its OS/400 operating system has undergone continual improvements. IBM promotes iSeries as an ideal platform for a variety of business applications, including e-business, Web serving, groupware and ERP (enterprise resource planning).

Many of the applications targeted by iSeries are business-critical, making continued availability and peak performance essential. To help deliver a performance level that will ensure productivity and customer satisfaction, systems professionals need a performance management solution specifically tailored to the iSeries.

BMC PATROL FOR ISERIES (AS/400)

BMC Software's Performance Management solutions allow users to accurately measure, manage and improve system and application performance. BMC PATROL provides tailored solutions that enhance your ability to understand how business systems and applications are performing, identify and resolve issues quickly, and optimize performance to cost effectively meet service-level goals. BMC PATROL for iSeries – Perform automates storage, analysis, reporting and tracking of iSeries system performance information using two components: Analyze and Visualizer.

- > **Analyze** runs on each iSeries system that you want to manage. It extracts and summarizes performance data and generates the files required for graphical analysis and reporting.
- > **Visualizer** runs on a Windows-based workstation and provides the database and graphical user interface for performance analysis and reporting.



Workload Active Jobs BMC PATROL for iSeries – Perform shows the number of active jobs for each defined workload per interval. Workloads can be configured on the iSeries or AS/400 to represent user IDs, job types, job names, subsystems, account codes, and a number of other job characteristics.

DATA COLLECTION AND REDUCTION

BMC PATROL for iSeries – Perform uses data collected by the standard performance monitor that is supplied with the OS/400 operating system. Performance monitor data encompasses a variety of performance metrics, including configuration and usage information for jobs, disks, IOPs (input/output processors), storage pools, and communication lines. Once performance data has been collected, Analyze organizes and reduces the data, and

creates the input files that will be used by Visualizer. A central iSeries system can be used to direct the data collection and reduction process. Input files are transferred to a Windows-based workstation where Visualizer can use them. BMC PATROL for iSeries – Perform provides integrated TCP/IP file transfer capabilities, although other data transfer methods may be used. Visualizer maintains the reduced OS/400 data in the performance database. This eliminates the need to store performance monitor data on your iSeries systems, saving valuable disk space.

VISUALIZING AND COMMUNICATING PERFORMANCE

The value of comprehensive performance data and analysis cannot be fully exploited without solutions for viewing, manipulating, and communicating performance information.

The Windows-based Visualizer component displays iSeries performance data in information-rich graphical reports. Its graphical user interface lets you drill down through logically related performance data and view key information in a variety of formats.



Workload I/O Rate Detail BMC PATROL for iSeries - Perform shows the average I/O per second for each workload

Visualizer graphs allow you to identify visual patterns quickly and help distinguish recurring problems from one-time situations. Visual reporting helps you:

- > View overall system health quickly
- > Identify exception conditions
- > Pinpoint performance bottlenecks
- > Track implemented changes and long-term trends
- > Communicate performance issues and status to management and users

Automated data visualization enables efficient and effective interpretation of performance data, which could otherwise be missed or require manual input and time-consuming analysis. It ensures that problems are readily discovered, investigated, and communicated.

Visualizer can generate a wide variety of performance reports and graphs, both in an automated fashion and in response to ad hoc queries.

BUSINESS-ORIENTED VIEWS

The job classification feature in Visualizer lets you specify how jobs running on your iSeries systems should be grouped into workloads for analysis and reporting.

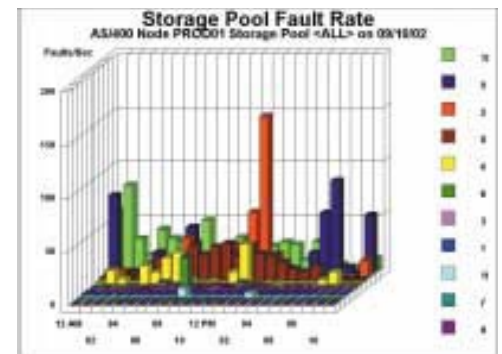
Using categories such as user ID or job type, you can see how particular users or jobs are using system resources. By grouping jobs into workloads, you can view resource consumption in a way that is meaningful from a business perspective.

DETAILED ANALYSIS

To understand current constraints and forecast future performance, it is essential that iSeries system managers and performance analysts have a grasp of key system metrics.

Visualizer graphs and reports are highly customizable, allowing you to ask very precise questions and create very specific views of the data. Drilling down on areas of interest can refine your view and help isolate root causes of problems and potential solutions. Visualizer for AS/400 can answer important questions, such as:

- > What is the utilization of all AS/400 systems?
- > Which workload is using the most CPU?
- > Which jobs consumed the most resources yesterday? Last week? Last month?



Storage Pool Fault Rate BMC PATROL for iSeries - Perform shows the fault rates for all memory pools on the system. The acceptable faulting on the iSeries and AS/400 is judged by two criteria: the faults in a pool and the total system faults.

- > Is there enough capacity to provide good interactive response time and batch throughput?
- > Which resource caused poor response time for Client Access/400 users?
- > How busy were the disk IOPs and disk arms during peak load?
- > How much available disk space is on the system?

Visualizer uses a sophisticated technique called MASF (Multivariate Analytical Statistical Filtering) to examine workloads for long-term patterns and typical peaks and valleys in use and response time. With an understanding of normal performance characteristics, efficient management by exception is possible.

Exception reporting Visualizer helps identify potential performance problems by displaying values that exceed the acceptable thresholds for important iSeries system metrics. Thresholds are set based on IBM guidelines for:

- > High-priority CPU utilization
- > System-pool fault rate
- > Disk arm utilization
- > IOP utilization
- > Communications line utilization
- > Storage-pool fault rate

Visualizer provides a daily display of exceptions in a historical context to help determine whether conditions are a one-time problem or a symptom of a developing trend.

TRACKING PERFORMANCE OVER TIME

Visualizer provides capabilities for tracking long-term performance. Performance information is provided graphically to give a continual view highlighting trends, anomalies or problems.

Monthly or weekly calendar graphs displaying key performance indicators give a bird's-eye view of performance trends. These unique graphs are useful to senior management and analysts who need to get a quick understanding of important performance metrics and patterns.

Data can be summarized into daily, weekly, monthly, and yearly results. This helps maintain an efficient performance database of key indicators.

Visualizer tracks and reports changes in response time, transaction rates, and resource consumption. Long-term performance information helps justify system investments in quantitative terms, which is helpful in budgeting and management reporting.

MANAGEMENT REPORTING

Visualizer depicts and highlights information about system performance in a way that is understandable and meaningful to business and IT managers and the general user community. With Visualizer graphs, you can explain in minutes what would normally take hours of sifting through printed information or tabular reports. As a management reporting solution, Visualizer provides:

- > An intuitive graphical user interface
- > Customized reports and diagrams for comprehensive analysis
- > Reports tailored for specific audiences
- > Automatic production of regular reports
- > Rapid response to ad hoc queries
- > Automated exception reporting
- > Trend reporting from a historical database
- > Automatic publication to the corporate intranet for viewing through a Web browser

Visualizer improves communication within the organization and helps keep users and decision makers informed about service levels.

AUTOMATING THE PROCESS

BMC PATROL for iSeries – Perform provides the ability to automate the performance analysis and reporting process. Analyze includes a QuickStart feature that allows you to schedule data collection, reduction, and deletion for one or more iSeries systems, all from a single screen. Visualizer input files are created as part of the data reduction process. Visualizer can automatically:

- > Populate the performance database with input files from Analyze
- > Produce standard and customized reports
- > Maintain and summarize the performance database

SUPPORTED ENVIRONMENTS

BMC PATROL for iSeries – Perform can manage iSeries and AS/400 systems running OS/ 400 V3R2, V3R6, V3R7, V4R1, V4R2, V4R3, V4R4, V4R5, V5R1, and V5R2. Visualizer is supported on Windows NT, Windows 2000, and Windows XP.

ABOUT BMC SOFTWARE

BMC Software delivers the solutions IT needs to increase business value through better management of technology and IT processes. Our industry-leading Business Service Management solutions help you reduce cost, lower risk of business disruption, and benefit from an IT infrastructure built to support business growth and flexibility. Only BMC provides best practice IT processes, automated technology management, and award-winning BMC Atrium technologies that offer a shared view into how IT services support business priorities. Known for enterprise solutions that span mainframe, distributed systems, and end-user devices, BMC also delivers solutions that address the unique challenges of the midsized business. Founded in 1980, BMC has offices worldwide and fiscal 2007 revenues of \$1.58 billion. Activate your business with the power of IT. www.bmc.com.



To learn more about how BMC can help activate your business, visit www.bmc.com or call (800) 841-2031

BMC, BMC Software, and the BMC Software logo are the exclusive properties of BMC Software, Inc., are registered with the U.S. Patent and Trademark Office, and may be registered or pending registration in other countries. All other BMC trademarks, service marks, and logos may be registered or pending registration in the U.S. or in other countries. IBM is a registered trademark of International Business Machines Corporation. All other trademarks or registered trademarks are the property of their respective owners. © 2007 BMC Software, Inc. All rights reserved.



* 7 1 6 2 0 *